



COMPACT

Punching

Nibbling

Forming

Marking



simply better!



With more than 50 years experience we can guarantee the Boschert quality users worldwide have come to expect.

COMPACT

The Compact punching machine from Boschert is the perfect machine for the first-time user of CNC punching technology.

Advantages: user-friendly graphic programming, high quality with low cost, small floor space requirement. Heavy duty C-frame construction allows working of oversized sheets, by using turning and automatic repositioning function.



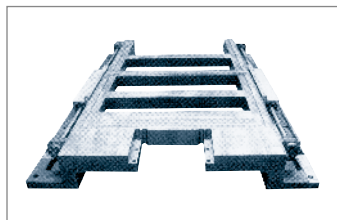
Control panel

10,5" TFT colour screen, ergonomically designed, it is adjustable and mounted on casters. Floppy disk drive, dual palm buttons, tool change position button, emergency-off. The powerful graphic and conversational software guarantees simple and fast programming. It is also available in a PC version.



Frame

Solid welded steel construction guarantees the highest stability for punching sheets up to 12,7 mm thickness.



Robust construction

Widely spaced ball screw and linear guides guarantee positioning accuracy and repeatability.



Electrical cabinet

Open and easily surveyed panel includes digital control, cooling fan,

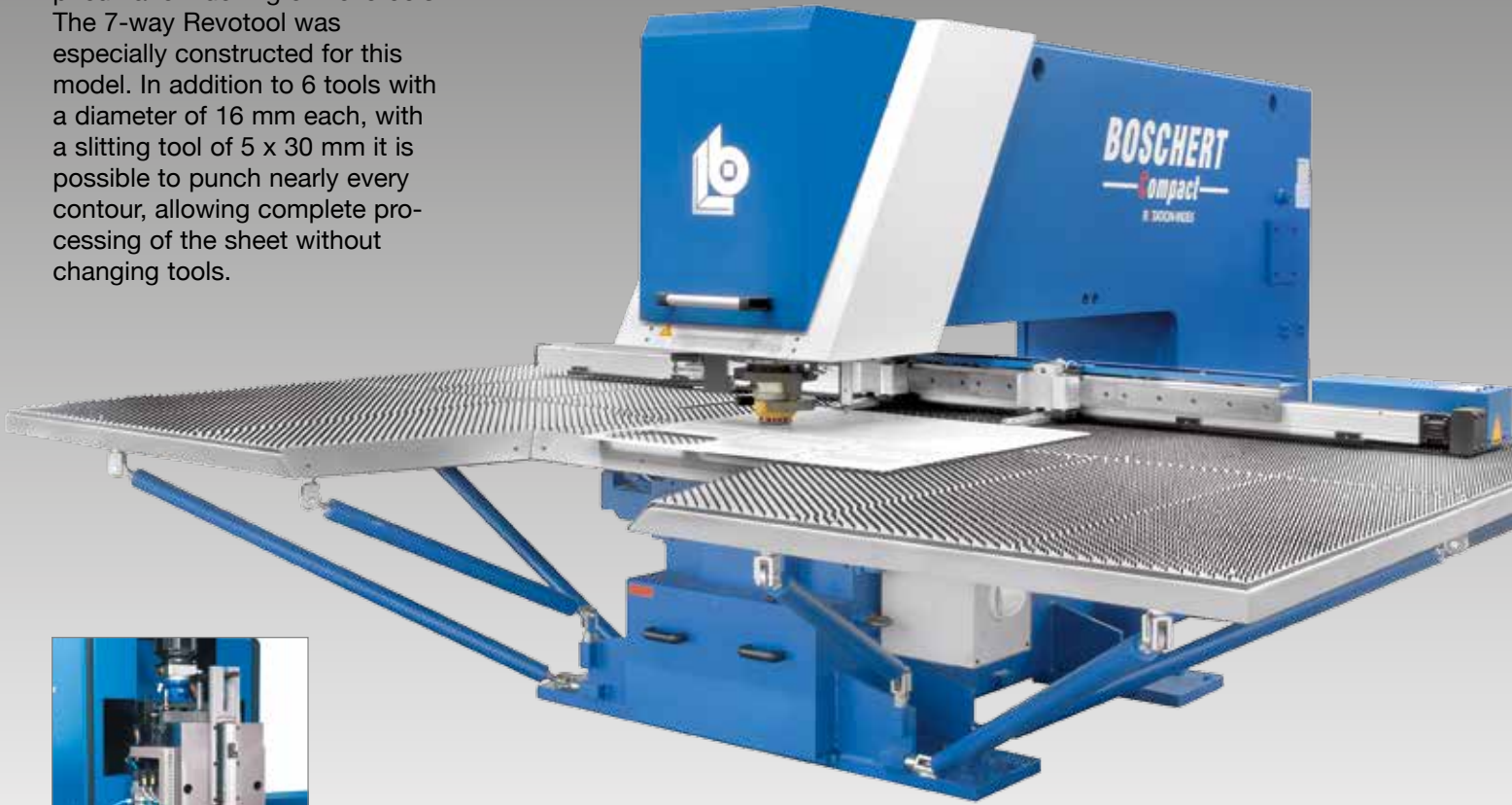
Industrial CPU

with RS232 and Modem connection. As an option also available with expanded memory and USB or wireless LAN.



COMPACT Rotation Index

Stepless 360 degree rotation of all tools up to 105 mm diameter using brushless DC motors and pneumatic indexing of Revotools. The 7-way Revotool was especially constructed for this model. In addition to 6 tools with a diameter of 16 mm each, with a slitting tool of 5 x 30 mm it is possible to punch nearly every contour, allowing complete processing of the sheet without changing tools.



Punching head rotation
Solid construction with DC motor and measuring system



Punching head rotation
Index equipment and also stripper height adjustment

Trumpf® standard tooling

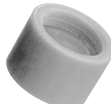
- easy handling
- low cost
- punch assembly mounts directly in the punch head without an adapter
- long tool life



punch



adjustment rings



PU stripper



die size I



4-station up to max. Ø 25 mm



6-station up to max. Ø 20 mm



8-station up to max. Ø 16 mm

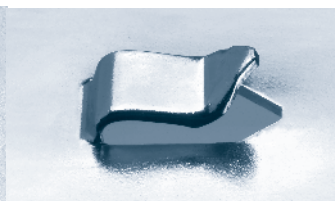
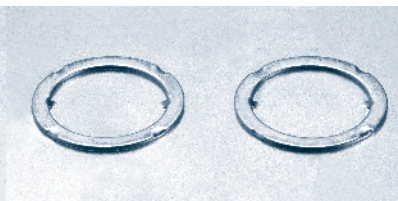
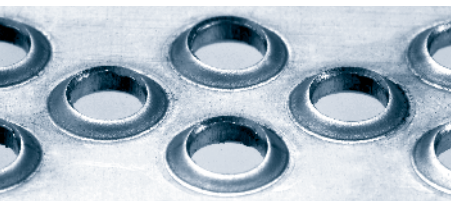


7-station with 6x up to max. Ø 16 mm with cutting tool



Tooling

Special 6-station to work on copper bar up to 10 mm



Technical Data

Working area

Compact	500 x 1000 (2000)	560 x 1080 mm (2080)
Compact	750 x 2000	810 x 2080 mm
Compact	1000 x 2000	1060 x 2080 mm
Compact	1250 x 2000 (2500)	1310 x 2080 mm (2580)
Compact	1500 x 2000 (3000)	1560 x 2080 mm (3080)

Performance

Max. sheet thickness	12,7 mm clamp opening / Revotool 6 mm ¹
Max. sheet length	9999 mm by repositioning
Max. hydraulic punching power	280 kN (optional 400 kN)
Max. workpiece weight	200 kg

Speeds

Max. positioning speed	
X- axes	60 m/min
Max. positioning speed	
Y- axes	30 m/min
simultaneous X & Y	67 m/min
Max. strokes standard hydraulic	250 strokes/min
Max. strokes fast hydraulic	800 strokes/min

Toolings

Trumpf® tooling system

Max. punching diameter	105 mm or any shape within 105 mm
Revotool	4 / 6 / 7 & 8 stations
Time of tool changing	2-4 sec. Revotool 15 sec. manual

Axes accuracy during punching process

Positioning difference	+ - 0,10 mm
Repeatability	+ - 0,03 mm

Space requirement and weights² B (X) T (Y) H

Compact	500 x 1000 (2000)	2900 (4000) x 2540 x 2100 mm 5800 (6000) kg
Compact	750 x 2000	4000 x 3165 x 2100 mm 7500 kg
Compact	1000 x 2000	4000 x 3790 x 2100 mm 9200 kg
Compact	1250 x 2000 (2500)	4000 (5860) x 4410 x 2100 mm 10800 (11000) kg
Compact	1500 x 2000 (3000)	4000 (6860) x 5058 x 2100 mm 14000 (15400) kg

Electrical Values

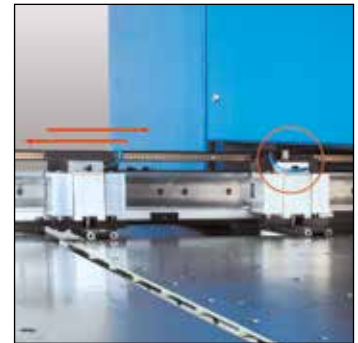
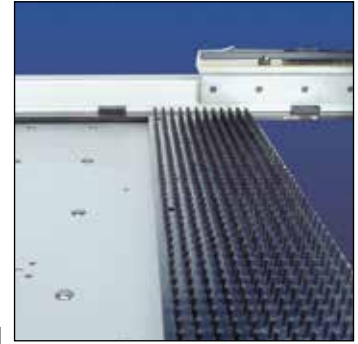
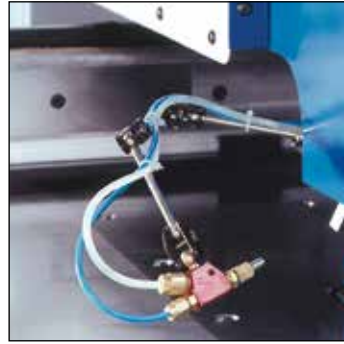
standard hydr. / fast hydr.

Electrical connecting value	20 / 25 kVA
Hydraulic motor	4,8 / 11 kW
Electrical consumption 2 mm sheet thickness continuous operation	4,9 / 7,7 kW/h
Electrical consumption 4 mm sheet thickness continuous operation	5,4 / 8,75 kW/h
Required fuse	3 x 25 A / 3 x 35 A

Pneumatic connecting value	min. 4 bar
Hydraulic oil	115 / 160 litre

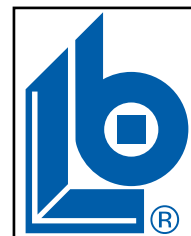
¹ Mild steel St 40/mm²

² The exact values can be found in each specific installation plan



More components of the Compact

- a An L-sheet is provided with all machines for working very small pieces and pre-bent parts. (Standard)
- b The automatic tool lubrication serves to increase tool life when nibbling stainless steel (VA) and decreases edge burrs in aluminium
- c Repositioning up to 10 meters and clamp movement without contacting the sheet. 2 robust clamps for sheets up to 200 kg (expandable to 4 clamps). Standard capacity up to 7 mm or 12,7 mm when required. (Standard)
- d Sandblasted, corrosion resistant surface as standard. Balls in the table for heavier sheets and easy handling, brushes in the table for thin or scratch sensitive sheets are also available.
- e Vacuum slug removal
- f CNC/CAD software to import DXF-files into machine language, calculated punch time, graphic simulation
- g Nibbling up to 800 strokes / min with integrated oil cooling
- h Programmable repositioning of the clamps for faster set up of the machine.
- i Tapping and drilling attachment for threads M3 up to M12 and smaller drilled holes in thicker sheets.
- j Marking apparatus for marking parts in 10 different fonts.



BOSCHERT

GmbH+Co.KG

Magyarországi Forgalmazó:
Metal Trading&Consulting kft
8200 Veszprém Radnóti M. tér 2.
Telefon: 06/30/9934 814
info@mtckft.hu www.mtckft.hu