



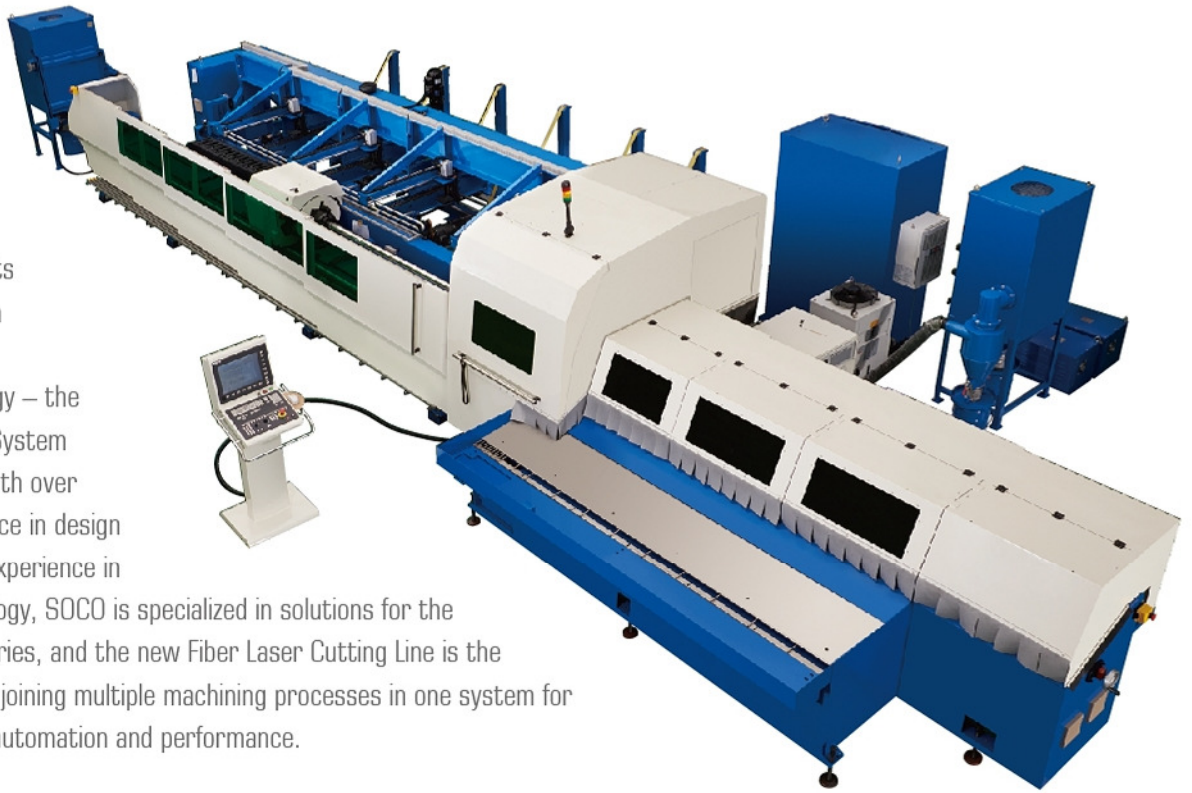
FIBER

Laser Cutting Line
For Tubes and Profiles

Complete Solution for Tube and Pipe

SLT-152-FIBER

SOCO's introduces its newest generation in tubes and profiles processing technology – the Fiber Laser Cutting System "SLT-152-FIBER". With over 30 years of experience in design and manufacturing experience in tube cutting technology, SOCO is specialized in solutions for the Tube and Pipe industries, and the new Fiber Laser Cutting Line is the ultimate solution for joining multiple machining processes in one system for maximum flexibility, automation and performance.



SLT-152-FIBER Automation Working Processes:

1. Automatic Tube Bundle Loading
2. Automatic Material Alignment
3. Automatic Feeding and Rotation
4. Fiber Laser Cutting
5. Unloading

Machine Standard Features:

Typical Laser Processes :

1. Straight & Angle Cutting
 2. Slotting
 3. Marking
 4. Notching
 5. Hole Making
- Capacity up to O.D. 152 mm
 - Cutting Lengths up to 2000mm or 3000mm (longer lengths by request)
 - Wall thickness from 0.6 - 6.0mm (Mild Steel)
 - Automatic Bundle Loading System with Material Alignment
 - Automatic Unloading System with Conveyor
 - Equipped with 1.0 kW (Standard) or 2.0 kW (Optional) Laser Resonator
 - Multi-Axis CNC Controls with Touch Screen Interface

- SOCO CAD-CAM system for Tubes and Profiles with built-in Nesting
- SOCO i2 (Intelligent interface) 3D operation software
- Cutting for round, square, rectangle and various profile shapes
- Enclosed Workstation for maximum safety
- Automatic Distance Control
- Laser Resonator Cooling and Fume extraction systems
- Automatic Scanning & Measuring of material before cutting
- Automatic Compensation after measuring of material
- Seam detection (Optional)
- Mandrel for spatter extraction (Optional)
- Feeding & unloading length detection(Optional)
- Automatic Cutting Path Planning (Optional)



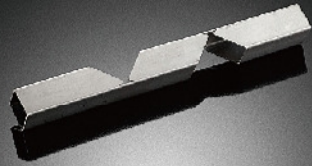
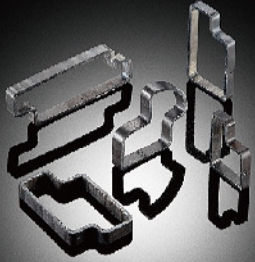
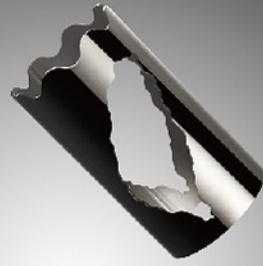
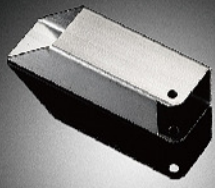
Automatic Bundle Loading Magazine



Automatic Material Alignment

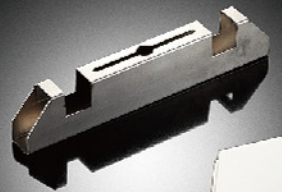
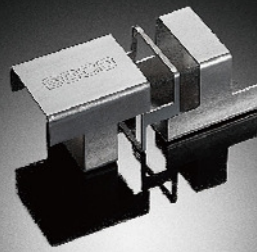


Automatic Feeding and Rotation



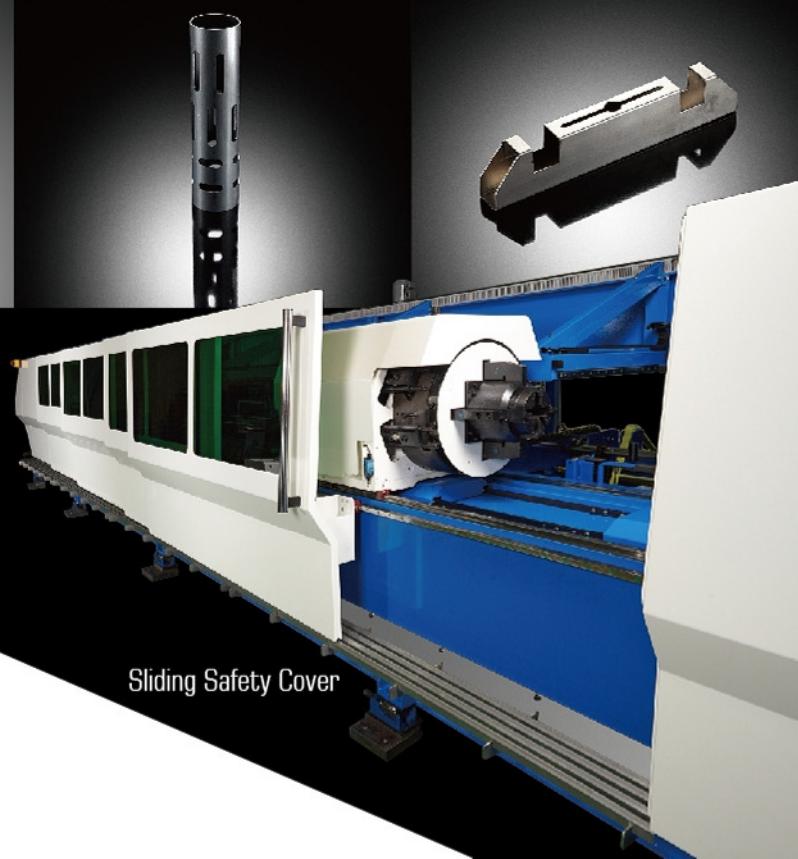
FIBER

Laser Cutting Line
For Tubes and Profiles



Suitable for (mm):

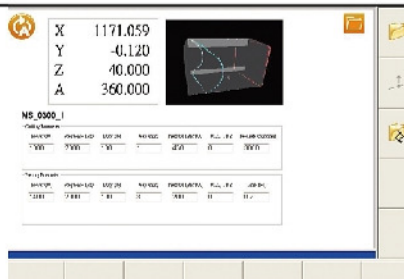
- Round Tube: O.D. 20 - 152
- Square Tube: 20 x 20 – 120 x 120
- Rectangular Tube: 20 x 20 and Max.O.D.150
- Oval Tubes
- L-shaped and C-shaped profiles
- Mild Steel, Stainless Steel and Aluminum materials



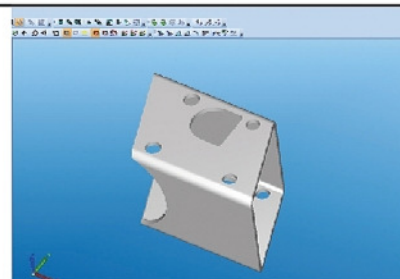
Sliding Safety Cover

Specifications		SLT-152-FIBER
Cutting Capacity	Round Tube	∅20 ~ ∅152
	Rectangular Tube	1. The shortest side of section $\geq 20\text{mm}$
		2. The longest side of section $\leq 150\text{mm}$
		3. The diagonal of section $\leq 170\text{mm}$
Tube Thickness Cutting Capacity	Mild Steel	6mm
	Stainless Steel	4mm
	Aluminum Alloy	3mm
Loading Unit	Material Length	3500mm ~ 6500mm (8500mm Optional)
	Max. Weight of Bundle Tubes	4000Kg
Unloading Unit	Max. Weight of Working Piece	120Kg
	Max. Length of Working Piece	3000mm (4500mm Optional)
Gross Weight	Loader	5100Kg
	Feeding System	4850Kg
	Laser Cutting Head System	2300Kg
	Unloader	3600Kg
Machine Dimension (L x W x H)	Loader	8300mm x 2850mm x 2180mm
	Feeding System	10000mm x 1625mm x 2310mm
	Laser Cutting Head System	1680mm x 3375mm x 3060mm
	Unloader	4120mm x 1920mm x 1750mm

Due to continuous improvements and designs; the manufacturer reserves the right to modify or make any changes of all models without notice.



SOCO 3D Operation Software



SOCO CAD-CAM system



www.soco.com.tw

SOCO MACHINERY CO., LTD.

NO.3, JINGKE E. RD., NANTUN DIST.,
TAICHUNG CITY 40852, TAIWAN
T : 886-4-23591888 F : 886-4-23592366
E : sales@soco.com.tw



151015/03E